



# Jobs 1

## A Complete the sentences with the name of the correct job.

1. A construction worker can build a house.
2. \_\_\_\_\_ repairs and maintains computers.
3. \_\_\_\_\_ cleans offices and buildings.
4. \_\_\_\_\_ publishes books and magazines.
5. \_\_\_\_\_ plans roads, bridges, and tunnels.
6. \_\_\_\_\_ puts together products in a factory.
7. \_\_\_\_\_ sews shirts, dresses, and other clothing.
8. \_\_\_\_\_ designs logos and advertising for companies.

## B Write the name of the job next to each area of study.

1. engineering: an engineer
2. medicine: \_\_\_\_\_
3. computers: \_\_\_\_\_
4. drama: \_\_\_\_\_
5. architecture: \_\_\_\_\_
6. art: \_\_\_\_\_
7. accounting: \_\_\_\_\_
8. business: \_\_\_\_\_
9. dentistry: \_\_\_\_\_



## C Write eight jobs that do not require a college education or a special license.

- a delivery person \_\_\_\_\_
- \_\_\_\_\_
- \_\_\_\_\_
- \_\_\_\_\_
- \_\_\_\_\_



**D** Read each advertisement from the telephone book. Write the name of the job.

<b>ART PARNES, Accountant</b> <ul style="list-style-type: none"> <li>• Income tax returns</li> <li>• New business planning</li> <li>• Personal financial planning</li> </ul> <b>555-9872</b>	<b>KAPLIN BROTHERS,</b> <ul style="list-style-type: none"> <li>❖ Indoor and outdoor lighting</li> <li>❖ Air conditioning and ceiling fans</li> <li>❖ Phone and cable wiring</li> </ul> <b>555-3248</b>
<b>JOHN ELBAUM,</b> <ul style="list-style-type: none"> <li>○ Teeth whitening</li> <li>○ Crowns and bridges</li> <li>○ Full and partial dentures</li> </ul> <b>555-6672</b>	<b>CARMEN GARCIA,</b> <ul style="list-style-type: none"> <li>✓ Creative haircuts</li> <li>✓ Permanents and straightening</li> <li>✓ Custom coloring</li> </ul> <b>555-4850</b>
<b>ANTON MICHAELS,</b> <ul style="list-style-type: none"> <li>• Additions</li> <li>• Custom home plans</li> <li>• Complete planning and design</li> </ul> <b>555-6549</b>	<b>JONG HO PARK,</b> <ul style="list-style-type: none"> <li>➤ Creative designs for weddings</li> <li>➤ Funeral arrangements</li> <li>➤ Cut flowers from around the world</li> </ul> <b>555-0945</b>



CD 2  
Track 22

**E** Listen to each speaker. Write the name of the correct job.

butcher	cashier	hairstylist	gardener
delivery person	<del>architect</del>	artist	babysitter

- |                     |          |
|---------------------|----------|
| 1. <u>architect</u> | 5. _____ |
| 2. _____            | 6. _____ |
| 3. _____            | 7. _____ |
| 4. _____            | 8. _____ |

**Word Work Small Group**

Discuss the jobs in the dictionary. Complete the sentences.

- \_\_\_\_\_ has a well-paid job.
- \_\_\_\_\_ does the same thing over and over.
- \_\_\_\_\_ is a blue-collar job.
- \_\_\_\_\_ has good benefits.
- \_\_\_\_\_ can run his/her own business.



**C Write a good job for a person with each talent or interest.**

1. A person who is good with numbers: a stockbroker
2. A person who loves animals: \_\_\_\_\_
3. A person who speaks well: \_\_\_\_\_
4. A person who enjoys performing for an audience: \_\_\_\_\_
5. A person who has good mechanical skills: \_\_\_\_\_
6. A person who enjoys traveling: \_\_\_\_\_
7. A person who likes children: \_\_\_\_\_
8. A person who is friendly and outgoing: \_\_\_\_\_

**D Write eight jobs that a person can learn how to do on the job.**

- a security guard
- \_\_\_\_\_
- \_\_\_\_\_
- \_\_\_\_\_
- \_\_\_\_\_



CD 2  
Track 23

**E Listen to each statement. Who is each person speaking to?**

1. a receptionist
2. \_\_\_\_\_
3. \_\_\_\_\_
4. \_\_\_\_\_
5. \_\_\_\_\_
6. \_\_\_\_\_
7. \_\_\_\_\_
8. \_\_\_\_\_
9. \_\_\_\_\_
10. \_\_\_\_\_

**Word Work Small Group**

Discuss or write the answer to each question.

1. If you were a musician, what instrument would you like to play?
2. If you were a pilot, what country would you like to fly to?
3. If you were a taxi driver, what city would you like to drive in?
4. If you were a receptionist, what kind of office would you like to work in?
5. If you were a salesperson, what product would you like to sell?
6. If you were a high school teacher, what subject would you like to teach?





# Jobs 2

## A Complete the sentences with the name of the correct job.

1. \_\_\_\_\_ A pilot \_\_\_\_\_ flies a plane.
2. \_\_\_\_\_ plans vacations for clients.
3. \_\_\_\_\_ sells cars, furniture, or other items.
4. \_\_\_\_\_ takes pictures at weddings or other events.
5. \_\_\_\_\_ reports the news of important events.
6. \_\_\_\_\_ cares for sick or injured people.
7. \_\_\_\_\_ drives a taxi.
8. \_\_\_\_\_ checks people who walk into a building.
9. \_\_\_\_\_ defends clients in court.
10. \_\_\_\_\_ buys and sells stocks and bonds.

## B Complete the Help Wanted ads with the correct job.

<p><b>Wanted</b> <b>Reporter</b> _____ to write news stories about local events. <i>Westwood Times</i>. 555-6783.</p>	<p>Licensed _____ to sell homes in the Westwood area. 555-1123.</p>	<p><b>Full Time</b> _____ for both indoor and outdoor painting. Must have own transportation. Will train. 555-5937.</p>
<p><b>Sam's Service Center</b> _____ to repair domestic and foreign cars. Exp. Req'd. 555-4309.</p>	<p>_____ for financial services company. Exp. with stocks and bonds, taxes, and financial planning. 555-0102.</p>	<p>Experienced _____ for second-grade class. Westwood Elementary School. 555-4000.</p>
<p>_____ to fly cargo planes on East Coast routes. Five years exp. 555-3761.</p>	<p><b>Westwood Hospital</b> Part-time _____ to work in emergency room. Must be available weekends. 555-8100.</p>	<p><b>Westwood Labs</b> _____ to work on research project. Must have strong chemistry background. 555-0304.</p>
<p>_____ to sell footwear at the Westwood Department Store. Evening hours. 555-0908.</p>	<p>_____ to work front desk at large law firm. Must speak English and have computer skills. 555-9000.</p>	





# Working

**A** In your notebook, write about each person. What does each person do?



1.



2.



3.



4.



5.



6.



7.



8.

1. This person designs houses.

**B** Complete the sentences.

1. A bus driver drives a bus.
2. A police officer catches people who break the law.
3. A person with a fever goes to work.
4. A personnel director hires a new worker.
5. A babysitter looks after children.
6. A chef cooks creative dishes.
7. A secretary writes letters on company letterhead.
8. A dentist examines a patient's teeth.
9. An architect designs homes and buildings.
10. A receptionist gives a message for the boss.



**C Check the duties of an office assistant.**

- |                                    |  |
|------------------------------------|--|
| ___ 1. To take messages            | ___ 7. To make copies                  |
| ___ 2. To cook lunch for the boss  | ___ 8. To staple reports               |
| ___ 3. To open the mail            | ___ 9. To hire new salespeople         |
| ___ 4. To type letters and reports | ___ 10. To use the computer            |
| ___ 5. To make company decisions   | ___ 11. To manufacture office supplies |
| ___ 6. To call in sick             | ___ 12. To file papers and reports     |



CD 2  
Track 24

**D Listen to each person. What is the person doing?**

1. *She's using a computer.* \_\_\_\_\_
2. \_\_\_\_\_
3. \_\_\_\_\_
4. \_\_\_\_\_
5. \_\_\_\_\_
6. \_\_\_\_\_
7. \_\_\_\_\_

**Word Work Partners**

Read each sentence. Then, write another example for each verb.

- |                         |                             |
|-------------------------|-----------------------------|
| 1. File a letter.       | <i>File a report.</i> _____ |
| 2. Design a kitchen.    | <i>Design a</i> _____       |
| 3. Manage a company.    | _____                       |
| 4. Repair a bicycle.    | _____                       |
| 5. Manufacture cameras. | _____                       |
| 6. Open the mail.       | _____                       |
| 7. Plan a wedding.      | _____                       |
| 8. Hire a painter.      | _____                       |





# Farm

## A Write the name of the baby animal.



1. \_\_\_\_\_ a kid



2. \_\_\_\_\_



3. \_\_\_\_\_



4. \_\_\_\_\_



5. \_\_\_\_\_



6. \_\_\_\_\_

## B Write the names of one or two farm animals.

1. Which animal can you ride? \_\_\_\_\_ a donkey \_\_\_\_\_
2. Which animal gives wool? \_\_\_\_\_
3. Which animal kills mice? \_\_\_\_\_
4. Which animals are household pets? \_\_\_\_\_
5. Which animals lay eggs? \_\_\_\_\_
6. Which animals give milk? \_\_\_\_\_
7. Which animals provide food? \_\_\_\_\_

## C Put the steps in order.

- \_\_\_\_\_ a. Water the seeds.
- \_\_\_\_\_ b. Plant corn seeds in the soil.
- \_\_\_\_\_ c. Put the corn in the silo.
- \_\_\_\_\_ 1 d. Plow the field with the tractor.
- \_\_\_\_\_ e. Pick the corn.
- \_\_\_\_\_ f. Watch the corn grow.



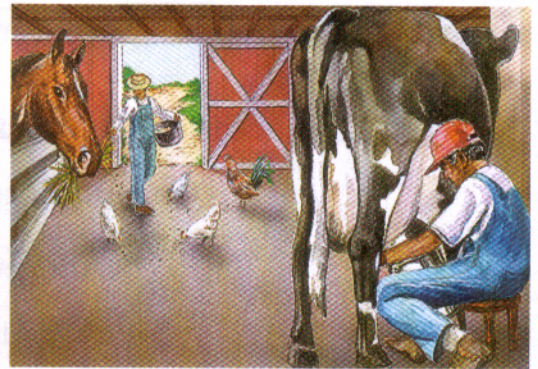
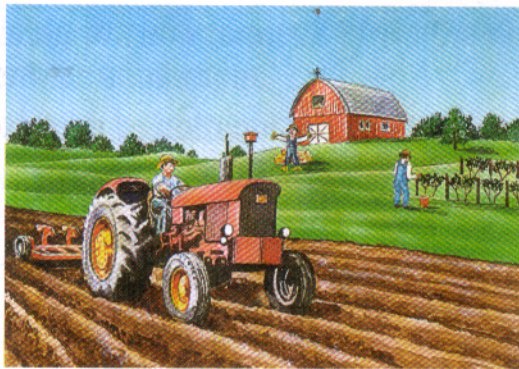
**D Complete the paragraph.**

Mr. and Mrs. Jones are farmers. They live in a farmhouse. There is a lot of work on the farm. Mr. Jones has four \_\_\_\_\_ to help him. Mr. Jones gets up at 5:00 in the morning. He \_\_\_\_\_ the cows and \_\_\_\_\_ the pigs and the horses. Mrs. Jones gets up early, too. She gathers the eggs from the \_\_\_\_\_. Mr. Jones grows several kinds of \_\_\_\_\_— corn, wheat, and alfalfa. He plows the \_\_\_\_\_ in the spring with his \_\_\_\_\_. There is a \_\_\_\_\_ in the field to keep the birds away. Every day, he checks the apple trees in the \_\_\_\_\_ and the grapes in the \_\_\_\_\_. In the fall, he \_\_\_\_\_ the apples from the trees.



CD 2  
Track 25

**E Look at each picture and listen to the statement. Circle *T* if the statement is true. Circle *F* if the statement is false.**



1. T F

4. T F

7. T F

10. T F

2. T F

5. T F

8. T F

11. T F

3. T F

6. T F

9. T F

12. T F

**Word Work Partners**

Did you ever visit or live on a farm? List five things that you did or that you saw.

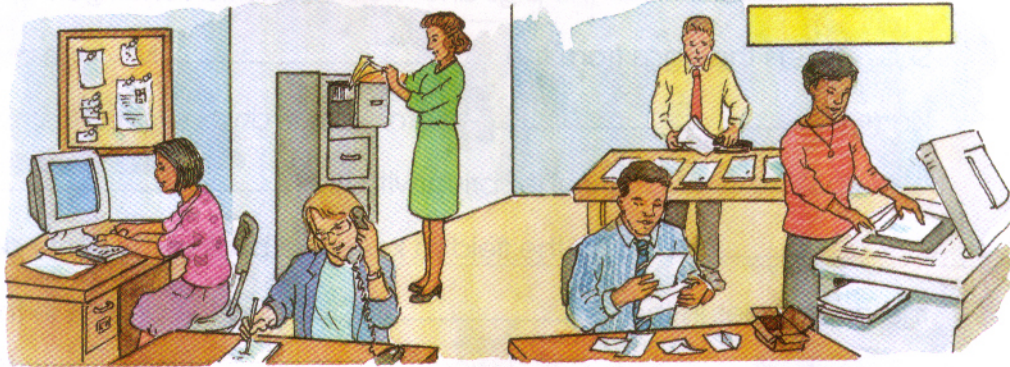
Examples: I *gathered the eggs*. I *rode on the tractor*.





# Office

**A** Write the names of eight office items or people you see in the picture.



thumbtacks

_____	_____
_____	_____
_____	_____
_____	_____

**B** Look at the office in your dictionary. Write the location of each item.

- |                                     |                                     |
|-------------------------------------|-------------------------------------|
| 1. Where is the business card file? | It's on the right side of the desk. |
| 2. Where are the binders?           | _____                               |
| 3. Where is the tape?               | _____                               |
| 4. Where is the shredder?           | _____                               |
| 5. Where is the resume?             | _____                               |
| 6. Where is the pencil sharpener?   | _____                               |
| 7. Where is the photocopy?          | _____                               |
| 8. Where is the large file folder?  | _____                               |
| 9. Where is the fax machine?        | _____                               |
| 10. Where is the office manager?    | _____                               |
| 11. Where is the secretary?         | _____                               |



**C Write the office manager's response to each request from the boss.**

I'll put them in the shredder.

I'll get them from the supply cabinet.

I'll send it on the fax machine.

I'll get you her resume.

I'll look in your appointment book.

I'll make them on the copy machine.

~~I'll look in the file cabinet.~~

I'll get the calculator.

1. Where are the old sales reports? I'll look in the file cabinet.
2. I need three copies of this report. \_\_\_\_\_
3. We don't need these reports anymore. \_\_\_\_\_
4. We need some more pencils. \_\_\_\_\_
5. When is the sales meeting? \_\_\_\_\_
6. I need to add these sales figures. \_\_\_\_\_
7. I'm interviewing Ms. Sims in five minutes. \_\_\_\_\_
8. The lawyer needs this letter immediately. \_\_\_\_\_



CD 2  
Track 26

**D Listen to each request. Write the number of the request next to the correct item or equipment.**

\_\_\_\_\_ a. letterhead

\_\_\_\_\_ e. file cabinet

\_\_\_\_\_ b. calculator

\_\_\_\_\_ f. telephone

\_\_\_\_\_ c. pencil sharpener

\_\_\_\_\_ g. correction fluid

1 d. sticky note

\_\_\_\_\_ h. thumbtack

**Word Work Partners**

How is a company office today different from an office 100 years ago?  
Write eight office items that were not used in offices 100 years ago.



_____	_____
_____	_____
_____	_____
_____	_____





# Factory

**A** Look at the picture of the factory in the dictionary. Circle **T** if the statement is true. Circle **F** if the statement is false.

- |   |                                    |   |
|---|------------------------------------|---|
| 1. There are four workers on the assembly line.               | <input checked="" type="radio"/> T | F |
| 2. All the workers on the assembly line are wearing hairnets. | T                                  | F |
| 3. The machine operator is wearing safety earmuffs.           | T                                  | F |
| 4. There are eight boxes on the forklift.                     | T                                  | F |
| 5. There's a truck at the loading dock.                       | T                                  | F |
| 6. A worker is loading boxes on the truck with a dolly.       | T                                  | F |
| 7. The shipping clerk is wearing a hard hat.                  | T                                  | F |

**B** Put the steps for manufacturing baby strollers in order.

- |                   |  |
|-------------------|--|
| _____ a.          | Workers on the assembly line put on the seat, the safety belt, and the wheels. |
| <u>1</u> _____ b. | Parts arrive at the factory.   |
| _____ c.          | A robot tightens the wheels.   |
| _____ d.          | At the end of the line, packers put the strollers into boxes.                  |
| _____ e.          | A forklift brings the packed boxes to the loading dock.                        |
| _____ f.          | A worker puts the stroller frames on the beginning of the conveyor belt.       |



**C** Match each hazard with an example.

- |                   |                       |    |                  |
|-------------------|-----------------------|----|------------------|
| <u>d</u> _____ 1. | biohazard             | a. | wires and cables |
| _____ 2.          | electrical hazard     | b. | gasoline         |
| _____ 3.          | explosive materials   | c. | arsenic          |
| _____ 4.          | flammable materials   | d. | medical waste    |
| _____ 5.          | poisonous materials   | e. | uranium          |
| _____ 6.          | radioactive materials | f. | dynamite         |



**D Write the name of the safety equipment that protects each part of the body.**

1. feet: safety boots
2. head: \_\_\_\_\_
3. eyes: \_\_\_\_\_
4. lungs: \_\_\_\_\_
5. ears: \_\_\_\_\_
6. hair: \_\_\_\_\_



CD 2  
Track 27

**E Listen to each sentence and circle the letter(s) of the correct worker. If none of the workers is wearing the equipment, circle *None*.**



**A**



**B**



**C**



**D**

- |                              |                          |
|------------------------------|--------------------------|
| 1. A   B   C   D <u>None</u> | 6. A   B   C   D   None  |
| 2. A   B   C   D   None      | 7. A   B   C   D   None  |
| 3. A   B   C   D   None      | 8. A   B   C   D   None  |
| 4. A   B   C   D   None      | 9. A   B   C   D   None  |
| 5. A   B   C   D   None      | 10. A   B   C   D   None |

**Word Work Small Group**

Write three rules for the factory in your dictionary.

Examples:

All workers must punch their time cards as soon as they report to work.

All workers must call the front office if they are going to miss a day of work.





# Hotel

## A Complete the sentences.

1. We have single rooms,  
\_\_\_\_\_, and large  
\_\_\_\_\_.
2. You can attend a meeting in one of our \_\_\_\_\_.
3. You can use the computers or make copies in our \_\_\_\_\_.
4. You can ask the \_\_\_\_\_ to get you tickets for a show.
5. You can buy souvenirs in our \_\_\_\_\_.
6. You can sit and relax in our \_\_\_\_\_.
7. You can celebrate a wedding or have a party in our \_\_\_\_\_.
8. You can exercise in our \_\_\_\_\_.
9. You can order dinner from our four-star \_\_\_\_\_.



## B Write the correct response.

You can order from room service.  
Call valet parking.  
In the ballroom.  
~~I'll call a housekeeper.~~

You can use the business center.  
I'll call the bellhop.  
You can speak with the concierge.  
It's 11:00 a.m.

1. Our bed hasn't been made. I'll call a housekeeper.
2. We have four suitcases. \_\_\_\_\_
3. I need to send a fax. \_\_\_\_\_
4. We would like dinner in our room. \_\_\_\_\_
5. Where is the art museum? \_\_\_\_\_
6. What time is check-out? \_\_\_\_\_
7. We need the car at 7:00 p.m. \_\_\_\_\_
8. Where is the wedding reception? \_\_\_\_\_



**C Complete the sentences about a terrible hotel stay.**

1. Room rates were very high. We paid \$250 a night.
2. The \_\_\_\_\_ at the registration desk was unfriendly.
3. We asked for a suite, but they only had \_\_\_\_\_.
4. The \_\_\_\_\_ was broken, and we had to walk up to the third floor.
5. The \_\_\_\_\_ didn't give us any towels.
6. \_\_\_\_\_ was very slow. We waited one hour for dinner.
7. There was no fax machine in the \_\_\_\_\_.
8. The children brought bathing suits, but the \_\_\_\_\_ was closed.
9. The \_\_\_\_\_ in the room next to ours partied until 2:00 a.m.
10. We had to get up early because the \_\_\_\_\_ time was 9:00 a.m.



CD 2  
Track 28

**D Listen to the conversation between a desk clerk and a caller. Complete the information.**

1. The caller made a reservation for \_\_\_\_\_ nights.
2. She wants a ( single room   double room   suite ).
3. The room rate is \_\_\_\_\_ a night.
4. Check-in time is \_\_\_\_\_. Check-out time is \_\_\_\_\_.
5. The caller asked about the following features ( fitness center   sauna  
business center   ballroom   gift shop   pool ).
6. Parking is ( free   an additional charge ).

**Word Work Partners**

You are going to spend the weekend at a hotel in the city. Rate these features from 1 (most important) to 8 (least important). Discuss your choices with your partner.

- |                    |                       |
|--------------------|-----------------------|
| _____ room rates   | _____ business center |
| _____ free parking | _____ room service    |
| _____ location     | _____ concierge       |
| _____ pool         | _____ fitness center  |





# Tools and Supplies 1

**A** Write the names of five tools in the tool belt.

\_\_\_\_\_ pliers \_\_\_\_\_  
\_\_\_\_\_  
\_\_\_\_\_



**B** What tool is each person using?



1. a hammer



2. \_\_\_\_\_



3. \_\_\_\_\_



4. \_\_\_\_\_



5. \_\_\_\_\_



6. \_\_\_\_\_



7. \_\_\_\_\_



8. \_\_\_\_\_

**C** Complete the sentences with one of the words in Exercise B.

1. Use a router to make a decorative edge.
2. Use \_\_\_\_\_ to cut a piece of wood.
3. Use \_\_\_\_\_ to put in a nail in the wall.
4. Use \_\_\_\_\_ to make a small hole in a wall.
5. Use \_\_\_\_\_ to chop down a tree.
6. Use \_\_\_\_\_ to dig a hole.
7. Use \_\_\_\_\_ to make wood smooth.
8. Use \_\_\_\_\_ to tighten a pipe.



**D Complete the questions.**

1. Dig a hole. Where's the \_\_\_\_\_?
2. Sand the wood. Where's the \_\_\_\_\_?
3. Drill a hole. Where's the \_\_\_\_\_?
4. Caulk the shower. Where's the \_\_\_\_\_?
5. Break the rock. Where's the \_\_\_\_\_?
6. Hold the wood tightly. Where's the \_\_\_\_\_?
7. Turn the screw. Where's the \_\_\_\_\_?



CD 2  
Track 29

**E Listen and write the price under the correct item.**



a.

\_\_\_\_\_



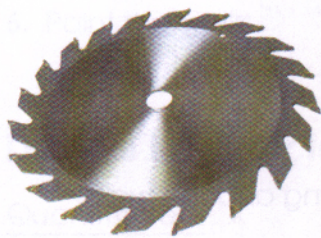
b.

\_\_\_\_\_



c.

\_\_\_\_\_



d.

\$17.00

\_\_\_\_\_



e.

\_\_\_\_\_



f.

\_\_\_\_\_

**Word Work Partners**

You are going to buy tools for a small toolbox. Which six tools will you buy first?

\_\_\_\_\_

\_\_\_\_\_

\_\_\_\_\_

\_\_\_\_\_

\_\_\_\_\_

\_\_\_\_\_





# Tools and Supplies 2

## A Complete the sentences.

1. You put insulation in the wall to keep a house warm.
2. You hammer a \_\_\_\_\_ into a wall.
3. You use a wrench to turn a \_\_\_\_\_.
4. You put \_\_\_\_\_ in a flashlight.
5. You turn a \_\_\_\_\_ with a screwdriver.
6. You build the frame of a house with \_\_\_\_\_.
7. You put \_\_\_\_\_ on a bathroom floor.
8. You hang a door on \_\_\_\_\_.
9. You hang a cup on a \_\_\_\_\_.
10. You sand wood with \_\_\_\_\_.

hinges  
sandpaper  
batteries  
screw  
~~insulation~~  
hook  
board lumber  
tile  
nut  
nail

## B Complete the steps to paint a room.

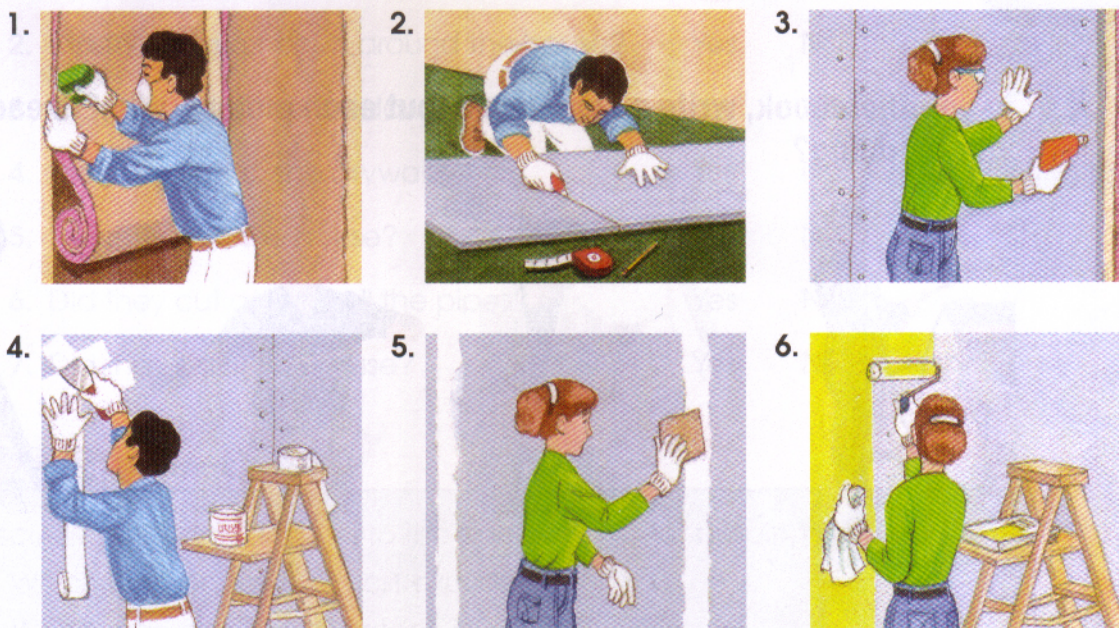
1. Fill any holes in the wall using spackle and a scraper.
2. Sand those areas with \_\_\_\_\_.
3. Tape the windows with \_\_\_\_\_.
4. Pour the paint into a \_\_\_\_\_.
5. Use a \_\_\_\_\_ to paint the ceiling and the walls.
6. Use a small \_\_\_\_\_ to paint the windows and molding.

## C Read the statements. Check *Good idea* or *Bad idea*.

- |  | Good idea | Bad idea |
|--|-----------|----------|
| 1. Hang a mirror with duct tape.           | _____     | ✓        |
| 2. Put a padlock on a door.                | _____     | _____    |
| 3. Put molding around the edges of a room. | _____     | _____    |
| 4. Put shingles on the ceiling.            | _____     | _____    |
| 5. Put a screw in an anchor.               | _____     | _____    |



- D** These workers are putting up drywall in a room. Write the tools and supplies that the workers need for each step.



1. Insulate the wall: \_\_\_\_\_ insulation \_\_\_\_\_
2. Measure and cut the drywall: \_\_\_\_\_
3. Put up the drywall: \_\_\_\_\_
4. Tape and spackle the seams: \_\_\_\_\_
5. Sand the seams: \_\_\_\_\_
6. Paint the walls: \_\_\_\_\_



CD 2  
Track 30

- E** Listen to this order for a hardware store. Complete the list of items.

Quantity/Item

- |                   |                     |
|-------------------|---------------------|
| 6 sheets of _____ | 2 rolls of _____    |
| 4 sheets of _____ | 4 door _____        |
| 2 boxes of _____  | 3 packages of _____ |
| 3 boxes of _____  |                     |

### Word Work Small Group

Pretend you are going to build a bookcase. What tools and supplies do you need? Write out the steps you need to follow.





# Drill, Sand, Paint

**A** In your notebook, write a sentence about each picture. What is each worker doing?



1.



2.



3.



4.



5.



6.



7.



8.

1. \_\_\_\_\_ He is welding.

**B** Complete the sentences. There are several correct answers.

1. If you want to \_\_\_\_\_ tear down a wall \_\_\_\_\_, you need a sledgehammer.
2. If you want to \_\_\_\_\_, you need a saw.
3. If you want to \_\_\_\_\_, you need a paintbrush.
4. If you want to \_\_\_\_\_, you need a shovel.
5. If you want to \_\_\_\_\_, you need a tape measure.
6. If you want to \_\_\_\_\_, you need a drill.
7. If you want to \_\_\_\_\_, you need a hammer.
8. If you want to \_\_\_\_\_, you need sandpaper.
9. If you want to \_\_\_\_\_, you need a pipe wrench.





CD 2  
Track 31

**C Listen to the conversation between two friends. Answer the questions.**

- |  |            |    |
|--|------------|----|
| 1. Did the workers pour the concrete?      | <u>Yes</u> | No |
| 2. Did they dig a trench around the house? | Yes        | No |
| 3. Did they install the windows?           | Yes        | No |
| 4. Did they put up the drywall?            | Yes        | No |
| 5. Did they wire the house?                | Yes        | No |
| 6. Did they cut and install the pipes?     | Yes        | No |
| 7. Did they paint the house?               | Yes        | No |



**Word Work Small Group**

Discuss or write the answers to the questions about building a house.

- Which jobs require the most experience?
- Which jobs require power tools?
- Which jobs require a worker to measure carefully?

**Word Study**

Analyze your vocabulary study. For one week, record your study time and your study activities. How much time do you study vocabulary? What activities or methods are most effective for you? At the end of the week, have a class discussion. Different students can explain the activities that are helpful for them.

Example:

Day	Time	Activities
Monday	10 minutes	Vocabulary notecards
Tuesday	15 minutes	I studied the words on pages 158 and 159. I highlighted the words that were new for me and said them aloud.
Wednesday	15 minutes	Vocabulary notecards I wrote two new words in my vocabulary journal and wrote sentences with them.

Day	Time	Activities
Monday	_____	_____
Tuesday	_____	_____
Wednesday	_____	_____
Thursday	_____	_____
Friday	_____	_____
Saturday	_____	_____