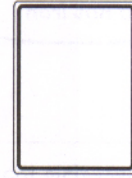




Vehicles and Traffic Signs

A Complete these signs. Write the missing words on the signs.



B Complete the sentences.

1. A bride and groom sometimes rent a limousine to take them to their wedding.
2. People in an _____ often stay at a campground.
3. A _____ transports food, appliances, furniture, and other items across the country.
4. A _____ takes children to school.
5. The truck is pulling a _____ with horses in it.
6. You call a _____ if your car breaks down on the highway.
7. Many countries require a _____ rider to wear a helmet.
8. People in a _____ can ride with the top down in good weather.
9. A _____ carries dirt or sand to a construction site.
10. An _____ takes injured people to the hospital.

C When you are driving, you must stop for certain vehicles when their lights are flashing. Write the names of four of these vehicles.

1. a police car
2. _____
3. _____
4. _____

D Complete the sentences with the names of vehicles. There are many correct answers.

1. A limousine is more comfortable than a pickup truck.
2. _____ can carry more than _____.

3. _____ is faster than _____.
4. _____ gets better gas mileage than _____.
5. _____ is more expensive than _____.
6. _____ is better for a large family than _____.
7. _____ is more useful on a farm than _____.



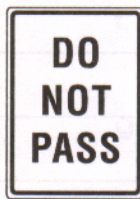
E Listen to each statement. Write the number of the statement under the correct road sign.



a. _____



b. _____



c. _____



d. _____



e. 1



f. _____



g. _____



h. _____



i. _____



j. _____

Word Work Small Group

Guess the meaning of these road signs.



1.



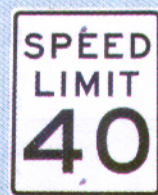
2.



3.



4.



5.



6.



7.



8.



9.



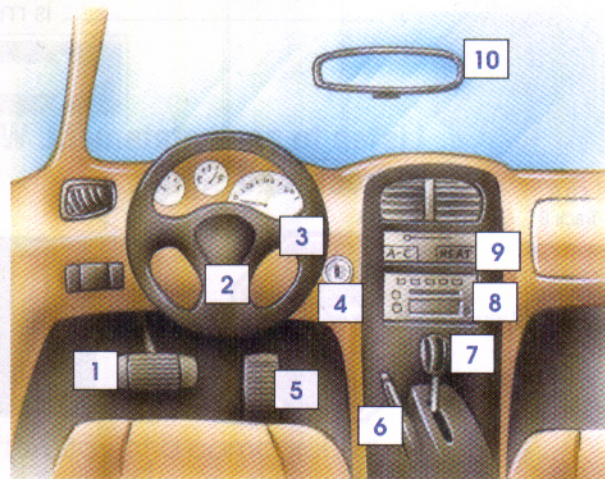
10.



Parts of a Car

A Write the name of each part of this car.

1. _____
2. _____
3. _____
4. _____
5. _____
6. _____
7. _____
8. _____
9. _____
10. _____



B Complete each sentence with a word from Exercise A.

1. Put the key in the _____ **ignition** _____.
2. Let's listen to some music. Turn on the _____.
3. Honk the _____.
4. Step on the _____. There is a stop sign ahead.
5. You're going too slowly. Step on the _____.
6. When you park on a hill, put on the _____.
7. It's hot in here. Turn on the _____.
8. Use the _____. Put the car in second gear.
9. Look in the _____. See if it's safe to pass.
10. Look at the _____. You're speeding!

C Match to make sentences.

- | | |
|---|--|
| <u>c</u> 1. I don't know how fast I'm going | a. because the gas gauge doesn't work. |
| — 2. I can't drive in the rain | b. because the rearview mirror is missing. |
| — 3. I can't listen to music | c. because the speedometer is broken. |
| — 4. I don't know if I need gas | d. because I don't have a spare tire. |
| — 5. I can't see the road behind me | e. because someone stole the radio. |
| — 6. I hope I don't get a flat tire | f. because the windshield wipers don't work. |
| — 7. I don't like to drive when it's hot | g. because the heater doesn't work. |



CD 2
Track 9

D Listen to a father teach his daughter how to drive. Circle the correct statement.

- | | |
|--------------------------------------|----------------------------------|
| 1. <u>a</u> . Step on the brake. | b. Step on the accelerator. |
| 2. a. Put on the brake light. | b. Put on the turn signal. |
| 3. a. Take off the gearshift. | b. Take off the emergency brake. |
| 4. a. Honk the horn. | b. Turn off the ignition. |
| 5. a. Check the rearview mirror. | b. Check the battery. |
| 6. a. Turn on the radiator. | b. Turn on the headlights. |
| 7. a. Turn on the windshield wipers. | b. Turn on the brake light. |

Word Work Small Group

Take this driving quiz. Then, discuss your answers with your group.

- | | | |
|---|------|-------|
| 1. You should pass another vehicle on the right. | True | False |
| 2. Driving too slowly can cause an accident. | True | False |
| 3. You can park in front of a fire hydrant. | True | False |
| 4. When you enter a highway, you must yield to traffic. | True | False |
| 5. Cars must stop for a pedestrian in a crosswalk. | True | False |
| 6. You can talk on a hand-held cell phone when driving. | True | False |



Road Trip

A Check the things you should do before you take a road trip.

- | | |
|--------------------------------|---|
| _____ 1. pack | _____ 5. check the oil |
| _____ 2. honk the horn | _____ 6. put air in the tires |
| _____ 3. get gas | _____ 7. look at a map and check the directions |
| _____ 4. get a speeding ticket | _____ 8. pay a toll |

B Put each group of sentences in order.

- _____ I showed the officer my license and registration.
- _____ I got a speeding ticket.
- _____ A police officer pulled me over.
- _____ 1 I was speeding.
-

- _____ I got on the highway again.
- _____ I was driving on the highway.
- _____ I changed the tire.
- _____ I pulled over to the side of the road.
- _____ I got a flat tire.

C Complete the story.

Ben and Joji decided to go to the beach. They packed their towels, bathing suits, and a picnic lunch into the car. Before they _____ the highway, they _____ gas and _____ the oil. As they were driving, they heard a loud noise. They _____ a flat tire. Ben _____ to the side of the road. They _____ the tire and continued along the road. After an hour, they _____ the toll and _____ the highway. They _____ at the beach at 11:00. They _____ the car and carried their things onto the beach.

D Match. What is this couple going to do?

- | | |
|---|---|
| <u> f </u> 1. After they pack the car, | a. they're going to call the police. |
| <u> </u> 2. When they get gas, | b. they're going to ask for directions. |
| <u> </u> 3. If they get lost, | c. they're going to park the car. |
| <u> </u> 4. If they pass a construction area, | d. they're going to check the oil. |
| <u> </u> 5. If they have an accident, | e. they're going to get a ticket. |
| <u> </u> 6. If they speed, | f. they're going to leave home. |
| <u> </u> 7. As they get off the highway, | g. they're going to pay the toll. |
| <u> </u> 8. When they arrive at the hotel, | h. they're going to slow down. |



CD 2
Track 10

E Listen to each statement and look at the picture. Circle *True* or *False*.



Picture 1

- | | |
|----------------|-------|
| 1. <u>True</u> | False |
| 2. True | False |
| 3. True | False |
| 4. True | False |



Picture 2

- | | |
|---------|-------|
| 1. True | False |
| 2. True | False |
| 3. True | False |
| 4. True | False |



Picture 3

- | | |
|---------|-------|
| 1. True | False |
| 2. True | False |
| 3. True | False |
| 4. True | False |

Word Work Small Group

Discuss or write the answers. Explain where you were and what you did in each situation.

1. Did you ever get lost?
2. Did you ever have a flat tire?
3. Did you ever get a ticket?
4. Did you ever have an accident?
5. Did you ever run out of gas?



Airport

A Complete the sentences.

1. A plane takes off and lands on a runway.
2. A _____ flies the plane.
3. Passengers must show a _____ at the ticket counter.
4. Passengers with electronic tickets can use the _____.
5. Passengers pass through a _____ at the security checkpoint.
6. A _____ is a small suitcase that a passenger takes onto the plane.
7. Passengers put their carry-on bags into the _____.
8. A _____ serves drinks and meals.
9. After the flight, passengers pick up their luggage in the _____.
10. Passengers from other countries must pass through _____.

B Put the sentences in order.

- _____ Stand in line at the security checkpoint.
- 1 Check in and show your photo ID at the ticket counter.
- _____ Walk to your gate.
- _____ Go through the metal detector.
- _____ Get your boarding pass.
- _____ Show your boarding pass and photo ID to the security officer.

C Read each statement. Circle T for True or F for False.

- | | | |
|--|---|----------|
| 1. You can buy your ticket at an automated check-in machine. | T | <u>F</u> |
| 2. You must show your photo ID when you check in. | T | F |
| 3. First class is more expensive than economy class. | T | F |
| 4. You need to take off a metal belt at the security checkpoint. | T | F |
| 5. You wait for your plane in the baggage claim area. | T | F |

6. At customs, the official can check your bags.

T F

7. All passengers must pass through immigration.

T F

D In your notebook, write eight sentences about this picture. Use the words below.

1. passengers

5. economy class

2. seat

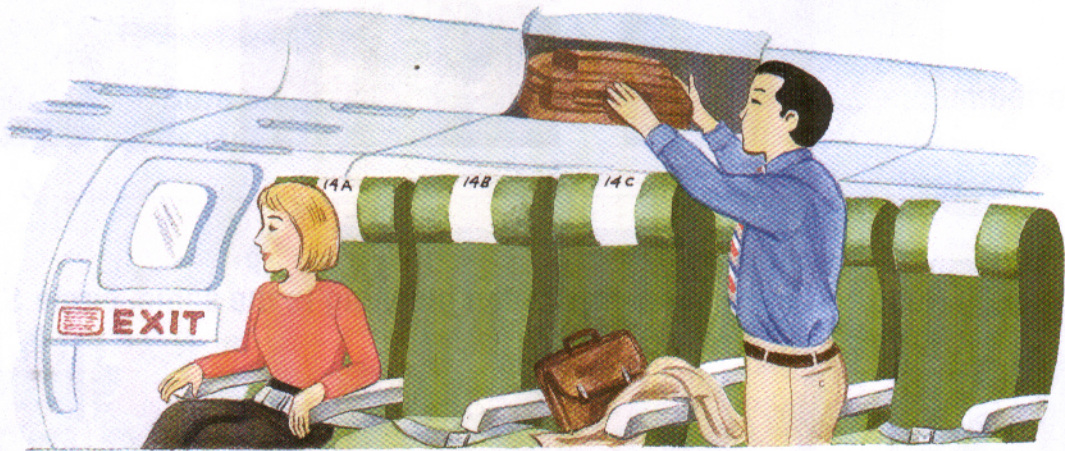
6. emergency exit

3. aisle

7. carry-on bag

4. seat belt

8. overhead compartment



CD 2
Track 11

E Listen to each sentence. Where is each person? Write the number of the statement next to the correct area in the airport.

___ security checkpoint

___ gate

1 customs

___ baggage claim

___ ticket counter

___ immigration

Word Work Small Group

Discuss or write the answers.

1. What is the nearest international airport to your house?
2. What airlines does it serve?
3. How often do you fly?
4. How long are the lines at the security checkpoint?
5. Do you buy airline tickets online or from a travel agent?



Taking a Flight

A In your notebook, write about each picture. What is happening?



1.



2.



3.



4.



5.



6.

B Read the two statements. If the meaning is the same, circle **S**. If the meaning is different, circle **D**.

- | | | | |
|---------------------------|---|------------------------------------|---|
| 1. Check in. | Go to the ticket counter. | <input checked="" type="radio"/> S | D |
| 2. Go through security. | Walk through the metal detector. | S | D |
| 3. Stow your bag. | Put your bag in the overhead compartment. | S | D |
| 4. Board the plane. | Get off the plane. | S | D |
| 5. Choose a meal. | Eat your meal. | S | D |
| 6. Claim your bag. | Get your bag at the baggage claim area. | S | D |
| 7. Fasten your seat belt. | Take off your seat belt. | S | D |

C Put the sentences in order.

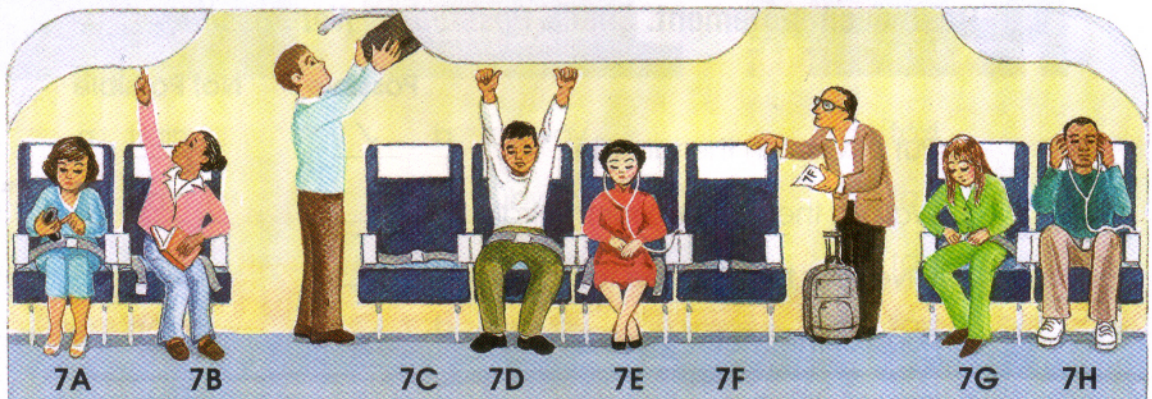
- _____ Sit down and fasten your seat belt.
- _____ Take off.
- 1 Board the plane.
- _____ Stow your carry-on bag.
- _____ Find your seat.

D Complete the sentences about an uncomfortable flight.

1. I had to wait one hour to go through security.
2. Our flight was delayed. I _____ for four hours.
3. The plane couldn't _____ because of the bad weather.
4. The overhead compartments were full, so I couldn't _____.
5. I couldn't read my book because I couldn't _____.
6. I decided to sleep. I _____, but there weren't any left.
7. I _____, but they were broken. I couldn't hear any music.
8. After we landed, I tried to _____, but all the luggage went to the wrong airport.



E Look at the picture and listen to each statement. Write the seat number of the correct passenger.



- | | | | |
|--------------|----------|----------|----------|
| 1. <u>7B</u> | 3. _____ | 5. _____ | 7. _____ |
| 2. _____ | 4. _____ | 6. _____ | 8. _____ |

Word Work Partners

You are on a long international flight. Write three sentences explaining how you will pass the time.

Example: I will put my seat back, put on my headphones, and listen to music.

1. _____
2. _____
3. _____



Public Transportation

A Complete the sentences.

1. The subway runs under the city.
2. If there are no seats, hold onto a pole or a _____.
3. A taxi can only carry three or four _____.
4. Each taxi has a _____ to show the fare.
5. A _____ can carry people and cars across a river.
6. You can buy a train ticket at a _____.
7. Give your ticket to the _____ on the train.
8. A _____ gives information about the train times.

B Read each statement. Check *Possible* or *Not Possible*.

| | Possible | Not Possible |
|--|-------------------------------------|--------------------------|
| 1. Put a token in the turnstile. | <input checked="" type="checkbox"/> | <input type="checkbox"/> |
| 2. Wait on the platform for the train. | <input type="checkbox"/> | <input type="checkbox"/> |
| 3. Give your ticket to the taxi driver. | <input type="checkbox"/> | <input type="checkbox"/> |
| 4. Look at the meter for your fare. | <input type="checkbox"/> | <input type="checkbox"/> |
| 5. Wait for the train at the taxi stand. | <input type="checkbox"/> | <input type="checkbox"/> |
| 6. Get a schedule for the next taxi. | <input type="checkbox"/> | <input type="checkbox"/> |
| 7. Ride the subway under the city. | <input type="checkbox"/> | <input type="checkbox"/> |

C Complete the sentences about different kinds of public transportation. There are many correct answers.

1. A train is more comfortable than a subway.
2. A _____ is quieter than _____.
3. A _____ is more expensive than _____.
4. A _____ is faster than _____.
5. A _____ is more crowded than _____.
6. A _____ is more convenient than _____.

D Match the questions and answers.

- | | |
|--|--------------------------------|
| <u> d </u> 1. Where can I get a taxi? | a. I take the bus. |
| <u> </u> 2. What's the fare? | b. On the platform. |
| <u> </u> 3. Where do I wait for the train? | c. I missed the bus. |
| <u> </u> 4. How do you get to work? | d. At the taxi stand. |
| <u> </u> 5. Where's your ticket? | e. It's \$2.00. |
| <u> </u> 6. Why are you late? | f. I catch the 7:25. |
| <u> </u> 7. What train do you take? | g. I gave it to the conductor. |



E Listen to each statement. Circle the type of transportation each person is talking about — train, subway, or taxi.



- | | | | |
|----|----------|-----------|----------------|
| 1. | a. train | b. subway | c. taxi |
| 2. | a. train | b. subway | c. taxi |
| 3. | a. train | b. subway | c. taxi |
| 4. | a. train | b. subway | c. taxi |
| 5. | a. train | b. subway | c. taxi |
| 6. | a. train | b. subway | c. taxi |
| 7. | a. train | b. subway | c. taxi |

Word Work Small Group

Discuss or write the answers.

- When do you take public transportation?
- Where do you wait?
- How much is the fare?



Up, Over, Around

A Circle the correct word.

1. A bridge goes (over under) a river.
2. A subway travels (along under) a city.
3. A plane flies (out of over) an ocean.
4. I rode my bicycle (along between) the river.
5. I swam (behind across) the river.
6. We drove (through between) the city.
7. I walked (over toward) the town.

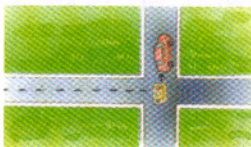


B Write the opposite of each sentence.

1. I drove into the tunnel.
2. I walked over the bridge.
3. I took a left at the light.
4. We made a right at the sign.
5. They hiked up the mountain.
6. Get onto Route 2 West.

I drove out of the tunnel.

C Write a direction line for each picture.

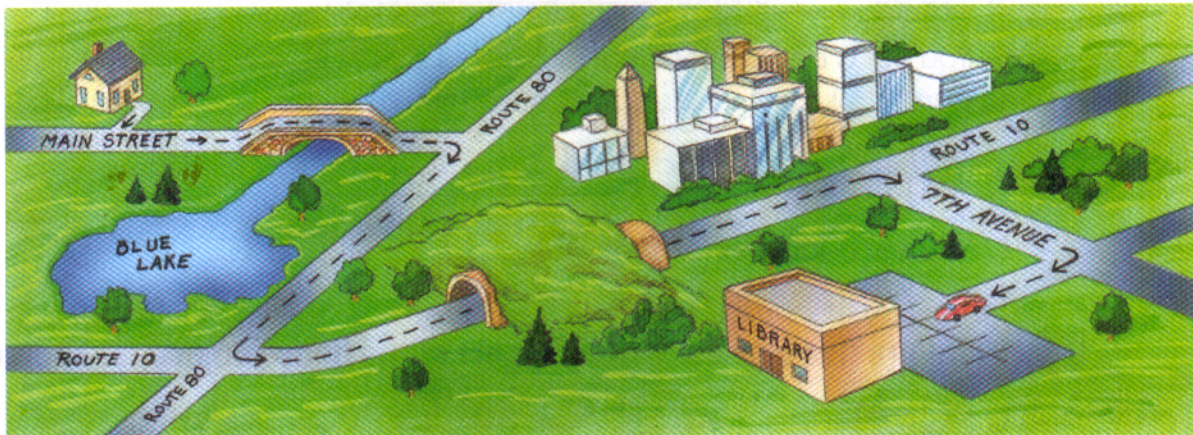


Turn left at the traffic light.



D Look at the map and complete the directions.

I am a librarian in the city and I drive to work. My house is on Main Street. I drive
_____ **along** _____ Main Street and go _____ the Mill Bridge. After the
bridge, I get on Route 80 South. After I go _____ Blue Lake, I make a
_____ onto Route 10 East. I drive _____ the Midtown Tunnel and
_____ the city. I make a _____ onto 7th Avenue, and then a
_____ into the parking lot. The parking lot is _____ the library.



CD 2
Track 14

E Listen to the directions to Brook Park. In your notebook, take notes or draw a map. Compare your directions with a friend. Listen again and check the directions.

Word Work Partners

Choose a well-known location in your city, such as the hospital or a museum. Write the directions from your school to that location.

Word Study

Talk to yourself in English. If you are alone, talk out loud. If you are in a store, on a bus, or in another location, "talk" in your head. Use your new vocabulary to describe what you see or what you are doing.

Example: *I'm driving south on Route 21. I'm going over a bridge. I'll get off at Exit 9. I need to stop for gas.*